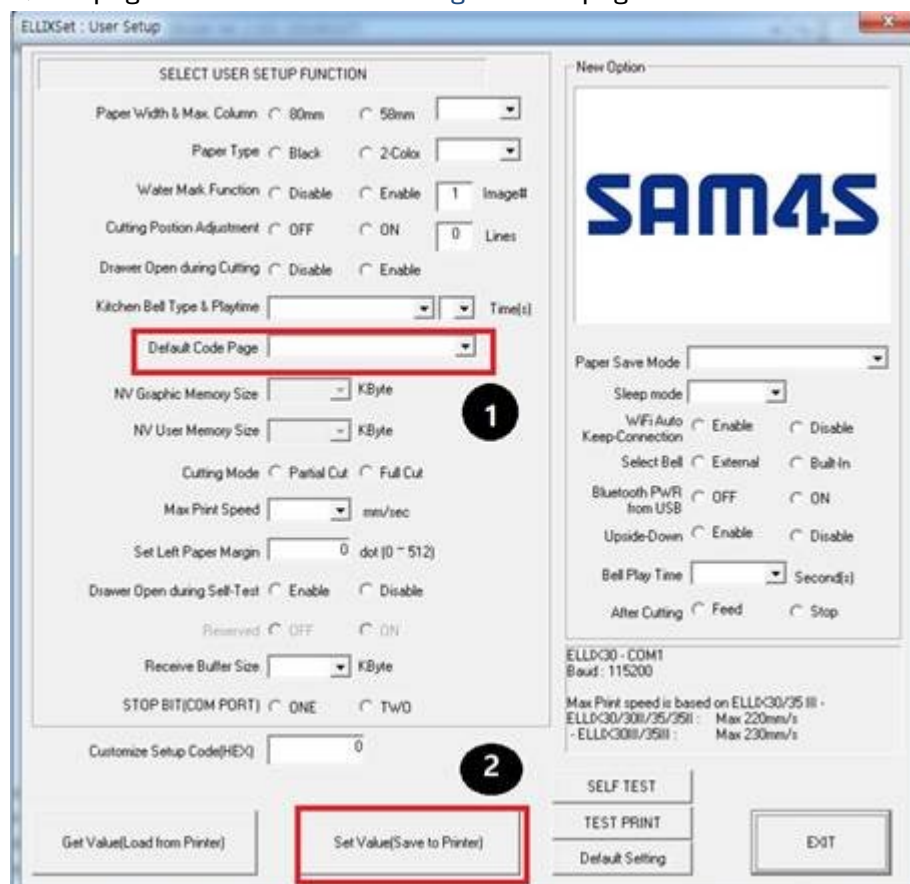


What code page will you use ?

If CP775 or WPC1257, then you need to use Utility to change them.

1) ELLIX Series

- ELLIXSet Ver 2.101.exe : ELLIX Series Utility
- User Guide For ELLIXSet V2.2.pdf : ELLIX Utility User Manual
- > 5page : [Pls. see utility connection](#)
- > 14 page: [Pls. see how to configure codepage](#)



2) GIANT&Gcube Series

- SAM4S GIANT&Gcube Tool.exe : GIANT&Gcube Series Utility
- GIANT-Tool UserGuide(Eng)_V1_09.pdf : GIANT Utility User Manual
- > 8-7 page : [Pls. see how to connect utility](#)
- > 21 page : [Pls. see how to configure Code page](#)

Printing Peripheral **Others**

Code Page

51| WPC 1257 (Baltic) ▾

Emulation

☐ EPSON ☐ STAR

Self Test Mode

☐ Self Test ☐ Hexa Dump

Memory

NV Graphic Memory

128 KByte ▾

NV User Memory

64 KByte ▾

Receive Buffer Size

▾

Paper Save

☐ LV 0(Default) ☐ LV 2
☐ LV 1(Recommended)

Sleep Mode

☐ 0 Min(OFF) ☐ 10 Min
☐ 5 Min ☐ 15 Min

Korean Bold

☐ Disable ☐ Enable

Upside-Down Print

☐ Disable ☐ Enable

Notice

Less than
version 1.03
of the printer
does not support
some functions

Get Value

Set Value

Set Default

Save

Load

Self-Test Print

Test Print

Cancel